

THE ID-SME TEAM

Using Asynchronous Collaboration to
Save Time Without Sacrificing Quality

QMConnect | Chicago | Nov. 2024

Tara L Perrin

tara.perrin@mtsu.edu

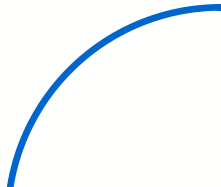
Instructional Designer
Intern Supervisor

[Middle Tennessee State University](#) (MTSU)

MTSU Online

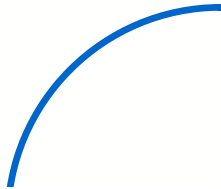
A G E N D A

- Gauge current use of and comfort level with using asynchronous tools in providing feedback during the ID-SME collaboration.
- Share a Case Study of an ID-SME collaboration that used asynchronous communication methods in developing a course, with examples.
- Revisit our poll
- Q&A



O B J E C T I V E S

- **Identify** strategies for effective asynchronous collaboration with SMEs
- **Rate** the significance of the potential challenges presented in employing asynchronous collaboration at your own institution
- **Be empowered** to use asynchronous collaboration for feedback with SMEs based on examples shared



**P
O
L
L**

Question 1:

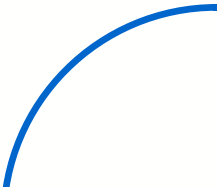
Other than email, do you currently use asynchronous tools in your collaboration process?

go.h5p.com Game code:1927651

Question 2:

What is your current comfort level with providing SMEs asynchronous feedback?

go.h5p.com Game code:0722664





THE CASE

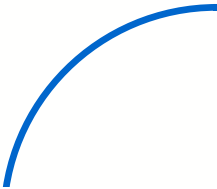
B A C K G R O U N D

Goal: To create an asynchronous 3000 level Religious Studies course that provided students an interactive pilgrimage experience from their own home.

Timeframe: 3-ish months

Framework: Collaborated with the SME in a consultative role focused on online best practices.

Context: New course not offered online previously; start of the new Religious Studies minor



P R O C E S S

COLLABORATION IS KEY

- **Meeting 1** - Our Conversation
- **Development Process** - SME builds course blueprint document in OneDrive; ID provides feedback, asks questions, seeks clarification, etc.
- **Meeting 2** - ID shows design mock-up in LMS to SME
- **Results** - ID builds course in LMS
- **Evaluate** - SME performs course review

Prepare for Our Pilgrimage Here!	24
Meet Your Professor	
Meet Here to Start Our Journey	4
Expedition 1: Hindu Pilgrimage	7
Expedition 2: Muslim Pilgrimage	6
Expedition 3: Christian Pilgrimage	7
Expedition 4: Indigenous Pilgrimage	7
Expedition 5: Buddhist Pilgrimage	8
Returning Home	5

VERTICAL
DESIGN
MOCK UP

STRATEGIES

THEY ARE THE SUBJECT MATTER EXPERT

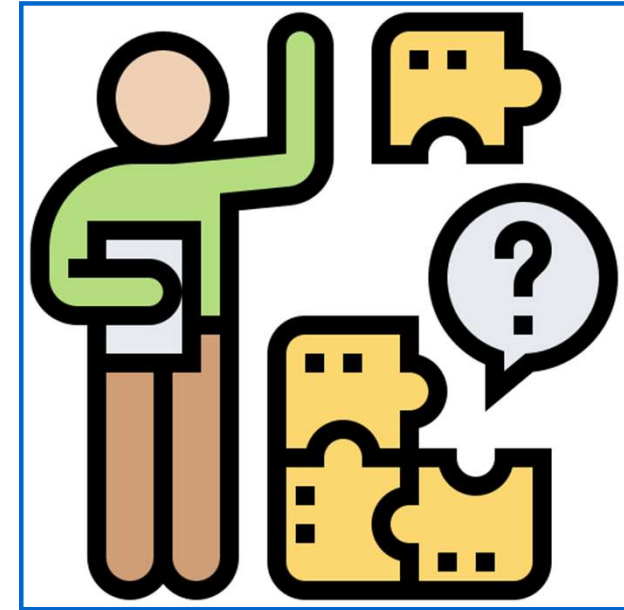
- Disarm
- Emphasize Expertise
- Reaffirm
- POP STAR



C H A L L E N G E S

ALWAYS BE PREPARED FOR

- Traditional Classroom Experience
- Role Misconceptions
- Learning Management System
- Other Technology Limitations
- Time & Resources



THE RESULTS



Course Homepage: Welcome Pilgrimage and Sacred Journeys

Course Welcome ▾

Hello Tara!

Welcome to RS 3060 Course Blueprint SU23! I am Dr. and will be your professor for this course.

RS 3060 is a cross-cultural and comparative examination of the dynamics of religious journeys with the goal of gaining a thorough understanding of the phenomenon of pilgrimage in all its complexity. *Completing the following items acts as your orientation to our course.* Familiarizing yourself with our course will help ensure you are aware of course expectations and guidelines.



- After viewing the overview, go to [Prepare for Our Pilgrimage Here!](#) It includes

Updates ▾

There are no current updates for RS 3060 Course Blueprint SU23

Course Information ▾

[Our Travel Plan - Syllabus RS 3060](#)

[Our Travel Schedule - Calendar RS 3060 ONLINE](#)

[Code of Public Conduct](#)

Instructor Information ▾

Module: Prepare for Our Pilgrimage Here!

[Begin RS 3060 Course Blueprint SU23 Pilgrimage Here!](#)



This is an introduction to our course journey. It includes important information for your success before you begin your journey so that you won't get lost along the way. At the conclusion of this introduction, you should be able to:

- Find faculty contact information.
- Identify course expectations as we take our RS 3060 Pilgrimage.
- Show proficiency using the D2L Survey and Discussion tools.

How to Complete the Pilgrimage:

- Follow the path of each pilgrimage and engage with the content for that pilgrimage - there are guided steps for each one;
- Adhere to the due dates along our pilgrimage and complete the activities by deadlines;
 - While we are on our journeys, do your best to stay with our group. Once you get behind it is difficult to catch up;
- Use the [Traveler Q&A](#) discussion board whenever you need assistance along the way. *You*

**B
E
F
O
R
E**

EXAMPLE 1

INTRODUCTORY DISCUSSION FORUM:

TEMPLATE: Introduce Yourself: Welcome to Pilgrimage and Sacred Journeys! There will be several opportunities throughout the course to engage with your classmates, including this discussion. This initial introduction exercise has 2 purposes: 1) an opportunity to meet each other and 2) prepare you for engaging discussions throughout the course.

INTRODUCTION TOPIC:

TEMPLATE: Please introduce yourself to your peers. Include your name, major if applicable, hobbies, hometown, career aspirations, and one or two facts about you personally that you feel comfortable sharing. In addition, tell us why you decided to take this online course on pilgrimage and sacred journeys, what you hope to learn, and what you hope to contribute to our class. Is a note, this discussion is set to require an initial post prior to seeing classmates' posts.

After completing your initial post, return to this discussion forum and respond to at least two classmates. Each response should include commonalities, connections, and reference to comments that are of interest. Meaningful and substantial responses are expected.

You can write your introduction or use the D2L Video Note tool. All discussion board posts may be written or recorded. (Link to instructions will open in new browser tab.)

D I A L O G U E

EXAMPLE 1



I was not going to do this. I felt like I already had a bunch of work for them the first week and there are always students who add the following week after we have moved on. But, I do see the value!

Let's make it 10 bonus points for those who complete it. They can start the class on a solid footing.

June 28, 2023 at 9:58 AM

EXAMPLE 1

A
F
T
E
R

Meet Your Fellow Travelers


Discussion Topic

You can write your introduction or use the [D2L Video Note](#) tool. (Link to instructions will open in new browser tab.) We'd love to see and hear you!

Please meet your fellow travelers. It's important to get to know each other a bit before we leave for our journey! Include your name, major if applicable, hobbies, hometown, career aspirations, and one or two facts about you personally that you feel comfortable sharing. In addition, tell us why you decided to take this online course on pilgrimage and sacred journeys, what you hope to learn, and what you hope to contribute to our course pilgrimage.

You must introduce yourself first before you'll see your fellow passengers' posts.

After completing your initial introduction, continue the conversation with a few others, at least 2 of your fellow travelers. Look for commonalities, connections, and reference to comments that are of interest. By doing so, we can start connecting with each other before our journey begins. Meaningful and substantial interactions are expected. I look forward to meeting you all!



EXAMPLE 2

B
E
F
O
R
E

QUESTIONS ABOUT OUR COURSE TOPIC:

TEMPLATE: Please ask questions related to the course here. This discussion board will be open to everyone for the duration of the course. Please contact me directly with any individual needs about specific feedback, grades earned, etc. There are no grades associated with this discussion topic but posting questions to our course board is encouraged. You might be helping one of your peers in the process!



D
I
A
L
O
G
U
E

EXAMPLE 2



SME

I have not had a great experience with this in my non-major courses. I want them to ask me.

June 28, [2023](#) at 10:07 AM

Tara Perrin

It is online best practice to include a Course Q&A board for students to ask questions since it is possible to get the same question repeatedly (although it is our goal to mitigate that as much as possible). As always, it is your course. Consider trying one more time with a slightly different design? Maybe rephrase for the class, specifically as in here you can ask questions as you go on each journey? I'll create an option and, if you're not a fan, I'll direct them to your email as indicated. :)

August 18, [2023](#) at 12:26 PM

SME

You talked me into it! I will try. Do you need me to go back into the document and add it? Or do these comments suffice?

August 21, [2023](#) at 9:24 AM

Tara Perrin

the comments suffice, thank you for giving me the opportunity to see if we can make it happen!

August 25, [2023](#) at 4:13 PM

EXAMPLE 2

A
F
T
E
R

Traveler Q&A ▾

In this course you will be traveling through each Pilgrimage and Journey by following the path provided in course content. *As with any traveler, you will have questions as you begin to move from one journey to another. This is a terrific place to post those questions so that you can help your fellow travelers as well.* Remember, while our journeys are personal, we are also experiencing this journey together. Seeking guidance about concepts, getting clarification about resources, activities, or assignments, or asking about artifacts along the way helps us create our own community.



Let's help one another as we travel on each expedition together! I (Faculty) will monitor this board, but you are encouraged to help your fellow travelers if you know the answer so we can learn together.

Photo by Kamaji Ogino

Topic	Threads
Need Some Help Before Departure - Ask your questions Here! ▾	0
Please post any questions you have about our first week here. There are NO bad questions, as long as you've looked for the answer first. We are all here to help each other so, if you know the answer, let your fellow passenger know!	
Ask Questions During Our Hindu Pilgrimage Here! ▾	0
Please post any questions you have about our Hindu Pilgrimage, weeks 2-3, here. There are NO bad questions, as long as you've looked for the answer first. We are all here to help each other so, if you know the answer, let your fellow traveler know!	
Ask Questions During Our Muslim Pilgrimage Here! ▾	0
Please post any questions you have about our Muslim Pilgrimage, weeks 4-5, here. There are NO bad questions, as long as you've looked for the answer first. We are all here to help each other so, if you know the answer, let your fellow traveler know!	

EXAMPLE 3

**B
E
F
O
R
E**

Instructional/Lecture Materials, Required	https://shikokutours.com/attractions/people-of-shikoku/Sendatsu Reread: <ul style="list-style-type: none">• Coleman, Simon and John Elsner. <i>Pilgrimage: Past and Present</i>. 213.
--	--

D
I
A
L
O
G
U
E

EXAMPLE 3




Image by: Freepik.com

Tara Perrin

@ [redacted], check this site out. It's pretty cool, and would help the students engage in a different way
August 25, 2023 at 11:55 AM

[redacted] 1

@Tara Perrin I like this ALOT! It is precisely the type of pilgrimage tours they read about in the Ian Reader text! Can we add it as a resource? Or do I need to write something up about it first?
August 25, 2023 at 1:47 PM

 **Tara Perrin**
→ Task assigned to [redacted]
@ [redacted], we can add it as a resource now and then, once you take a closer look, consider adding a few sentences that could be crafted to align with the Reader text thus providing context and purpose. For now I stated "explore" Shikoku Tours in D2L

A
F
T
E
R

EXAMPLE 3

<https://shikokutours.com/>

During Week 11, engage with the following along the way:

- Read Chapters 2 & 3, pages 39-106. From, Reader, Ian. *Making Pilgrimages: Meaning and Practice in Shikoku*. Honolulu: University of Hawai'i Press, 2005.
- Explore Shikoku Tours Website
- Complete Travel Log #6

Don't forget you can [Ask Questions During Our Buddhist Pilgrimage Here!](#) Helping each other is a great way to learn, and something we do all the time as professionals!

P
O
L
L

Revisit:

Has your comfort level for providing SMEs asynchronous feedback increased due to this presentation?

go.h5p.com Game code:3425645



QUESTIONS

T
H
A
N
K
Y
O
U

THE ID-SME TEAM: USING ASYNCHRONOUS COLLABORATION
TO SAVE TIME WITHOUT SACRIFICING QUALITY

Scan the QR Code Below



Tara L Perrin

tara.perrin@mtsu.edu
Instructional Designer
Intern Supervisor

MTSU Online