



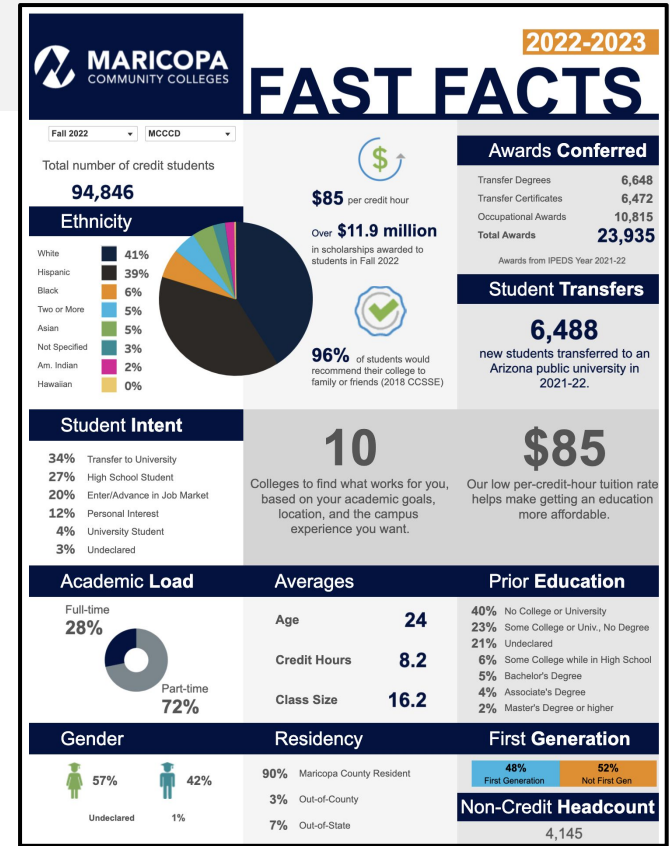
**MARICOPA**  
COMMUNITY COLLEGES

# Using Data to Align Program Offerings to Workforce Needs

Ignacio Molina, District Director of Workforce Development

Helice Agría, District Director of Academic & Student Systems

- 10 individually accredited colleges, supported by a district office
- Certificates (461) and degrees (130)
- 7,087 active courses
- Locally elected Governing Board
- 9 out of 10 colleges designated as Hispanic Serving Institutions (HSIs)
- 23,048 Completions (2021)



Program Creation

Program Review

Strategic Planning

Curriculum  
Alignment

Skill Alignment

Grant Applications

Market Tendencies

Educational - LMI  
Intersections

Research

## Public Sources



U.S. BUREAU OF LABOR STATISTICS



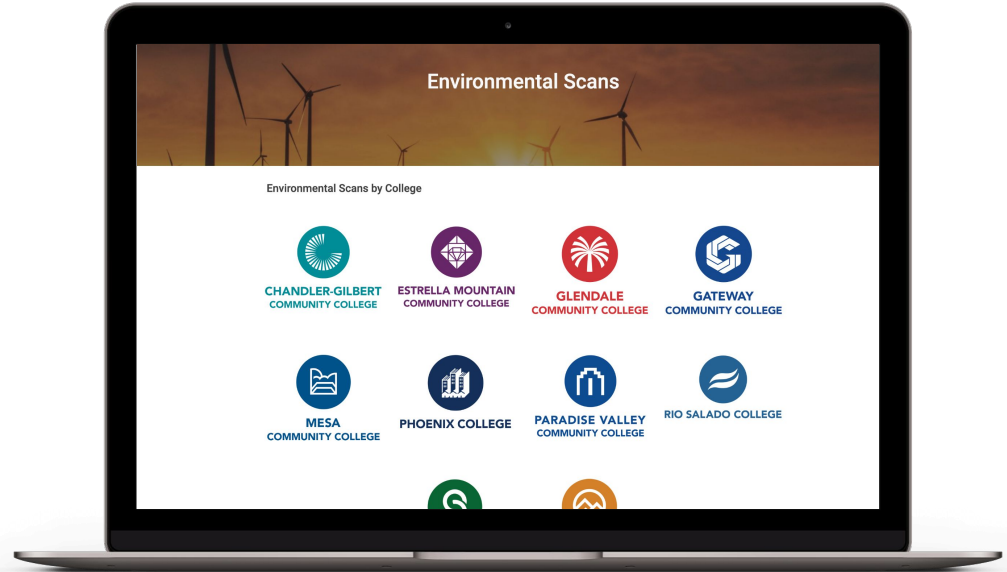
**IPEDS** Integrated Postsecondary  
Education Data System

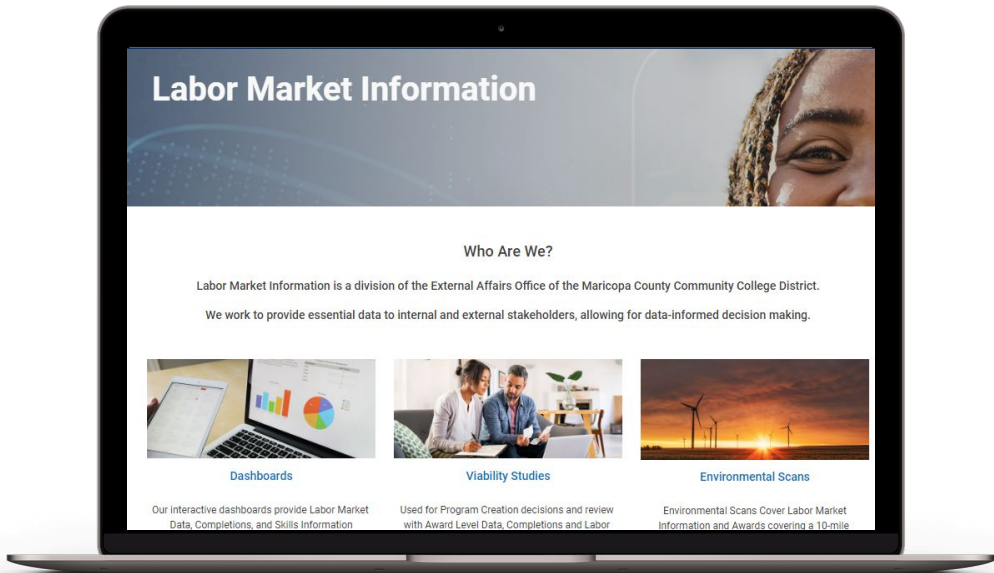
## Private Vendors



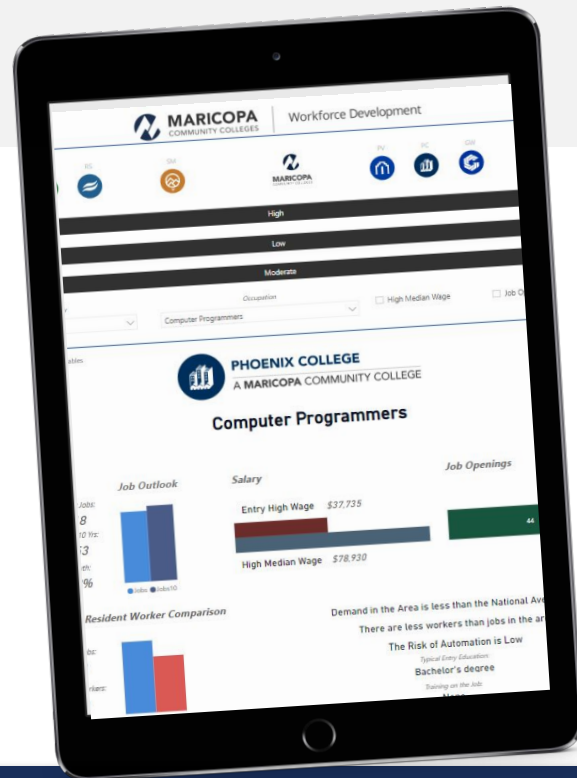
## Internal Data/Surveys

- Viability Reports
- Environmental Scans
- LMI Dashboards
- Economic Analysis
- Raw Data
- Enrollment Trend Analysis
- Presentations





Website

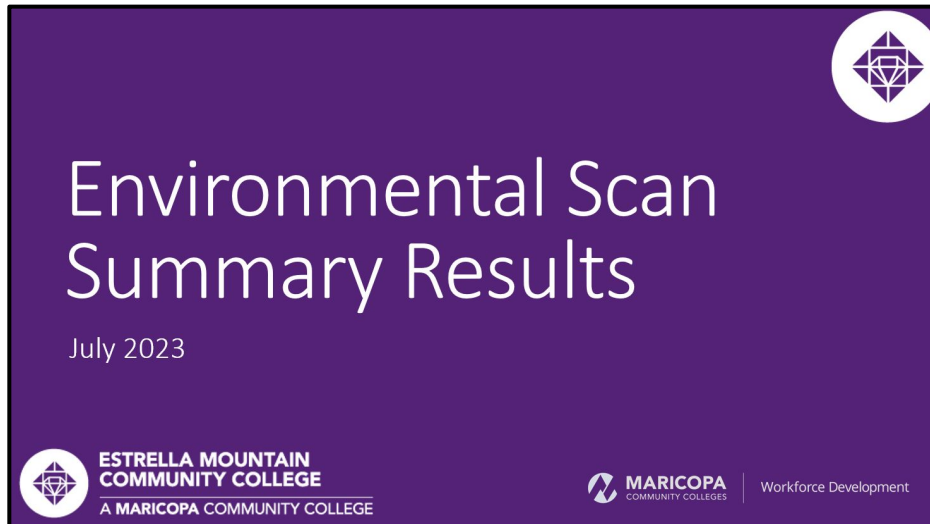


Dashboards

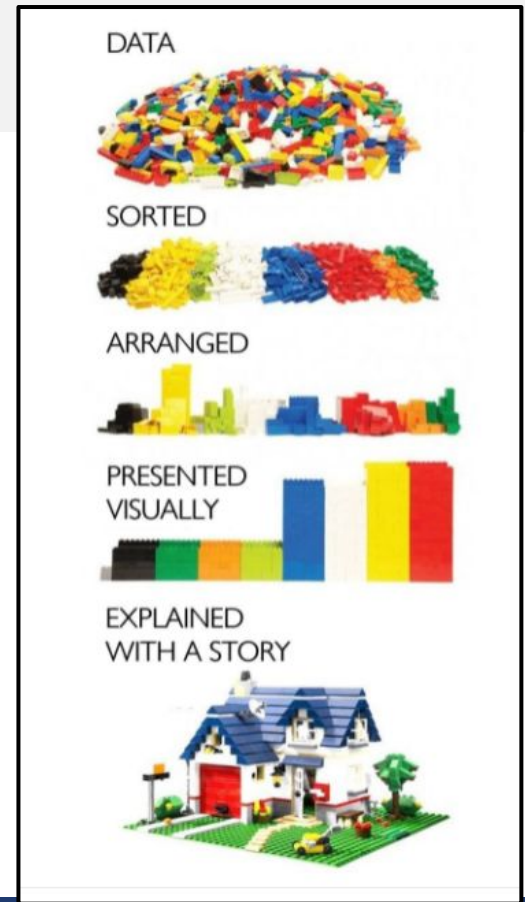
## Reports



## Presentations



- Data literacy
- Insights rather than data
- Data collaboration - faculty, administration, data staff
- Communication - what are they really asking for?
- Funding - human and data resources
- Data availability - expensive!
- Sources - hard to research/overload





# Data in Action



**EARLY CHILDHOOD -  
DUAL LANGUAGE**

MESA



**ELEMENTARY AND  
SPECIAL EDUCATION**

GLENDALE, PARADISE VALLEY, RIO SALADO



**DATA ANALYTICS  
& PROGRAMMING**

MESA



**INFORMATION  
TECHNOLOGY**

PHOENIX



**PUBLIC SAFETY  
ADMINISTRATION**

PHOENIX, RIO SALADO



**BEHAVIORAL  
SCIENCES**

SOUTH MOUNTAIN



**NUCLEAR  
MEDICINE**

GATEWAY

2022

## Information Technology



This Photo by Unknown Author is licensed under CC BY-SA-NC

Workforce and Economic Development Office  
 Maricopa Community Colleges  
 5/13/2022

Program	Information Technology
Enrollment to Completion Ratio	7.6
State Bachelors Enrollment 2014*	7,834
State Bachelors Enrollment 2020*	10,404
State Bachelors Completion 2020 (Cohort 2014)	1,306
MCCCD Bachelors Enrollment 2020 (Cohort 2014)	116
MCCCD Expected Enrollment (2024)	122
MCCCD Even Enrollment at 16% Share	1,654
MCCCD Market Share	1%
% Maricopa County Market Share	100%

*Table 1: Enrollment Simulations using Graduation Rates*





## Bachelor's Degree Programs

Color Key: Green = High priority/weight | Yellow = Medium priority/weight | Red = Low priority/weight

SB1453 Requirements				
Criteria - Evidence/KPI		Rating		
	Evidence/KPI	Exemplary (3)	Emerging (2)	Minimal (1)
Evidence is provided to demonstrate workforce need for the Baccalaureate Degree program in the region served by the community college	Local workforce needs exist and are currently unmet as demonstrated by the # of employers that are hiring (or are projected to hire) for this position requiring a bachelor's degree vs associate or certificate award	Proposal demonstrates significantly increasing projected growth for jobs or career pathways requiring a bachelor's degree associated with this program of study.	Proposal demonstrates a consistent increase in projected growth for jobs or career pathways requiring a bachelor's degree associated with this program of study.	Proposal demonstrates little to no consistent projected growth for jobs or career pathways requiring a bachelor's degree associated with this program of study.
	Local workforce needs exist and are currently unmet as demonstrated by the # of industries/career pathways (or are projected) available requiring a bachelor's degree vs associate or certificate award level	Proposal demonstrates significant growth in projected annual openings for positions requiring a bachelor's degree associated with this program of study.	Proposal demonstrates annual openings for the positions requiring a bachelor's degree associated with this program of study that is consistent and projected to increase.	Proposal demonstrates annual openings for the positions requiring a bachelor's degree associated with this program of study that is consistent but not projected for growth and/or retracting.
	Local workforce needs exist and are currently unmet as demonstrated by the # of graduates compared to workforce demand of jobs requiring a bachelor's degree vs associate or certificate award level	Proposal demonstrates a significant gap in graduates as compared to employees needed with a bachelor's degree associated with this program of study.	Proposal demonstrates little to no gap in graduates as compared to employees needed with a bachelor's degree associated with this program of study.	Proposal demonstrates there is an excess of graduates as compared to employees needed with a bachelor's degree associated with this program of study.

\*\*This document is for MCCC internal use. Do not distribute outside MCCC\*\*

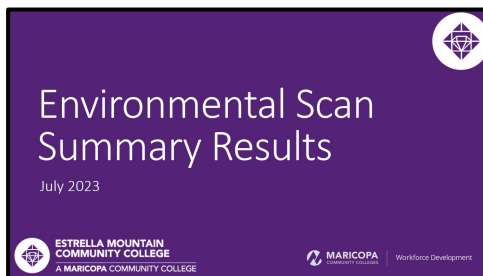
- Data is used to create a short list of priority areas
- Viability is reviewed against 23 criterion
- Colleges use the data to conduct internal and external viability
- LMI information is shared with the Governing Board for authorization

# Lesson from the Data Trenches

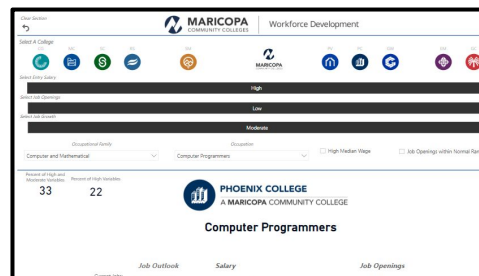
- Increased buy-in and use of LMI; especially for faculty and administration to propose and execute innovative strategies
- More work is needed to increase investment and data literacy
- College level research is imperative
  - Inferences about Published research/benchmarking vs colleges realities
  - Understand Zone Economic and Labor Environment and its relation to college data (Enrollment, Completion, Attrition etc)
- Industry demand does not necessarily translate into student demand



Reports



Presentations (ES)



Dashboards



Research Bachelors