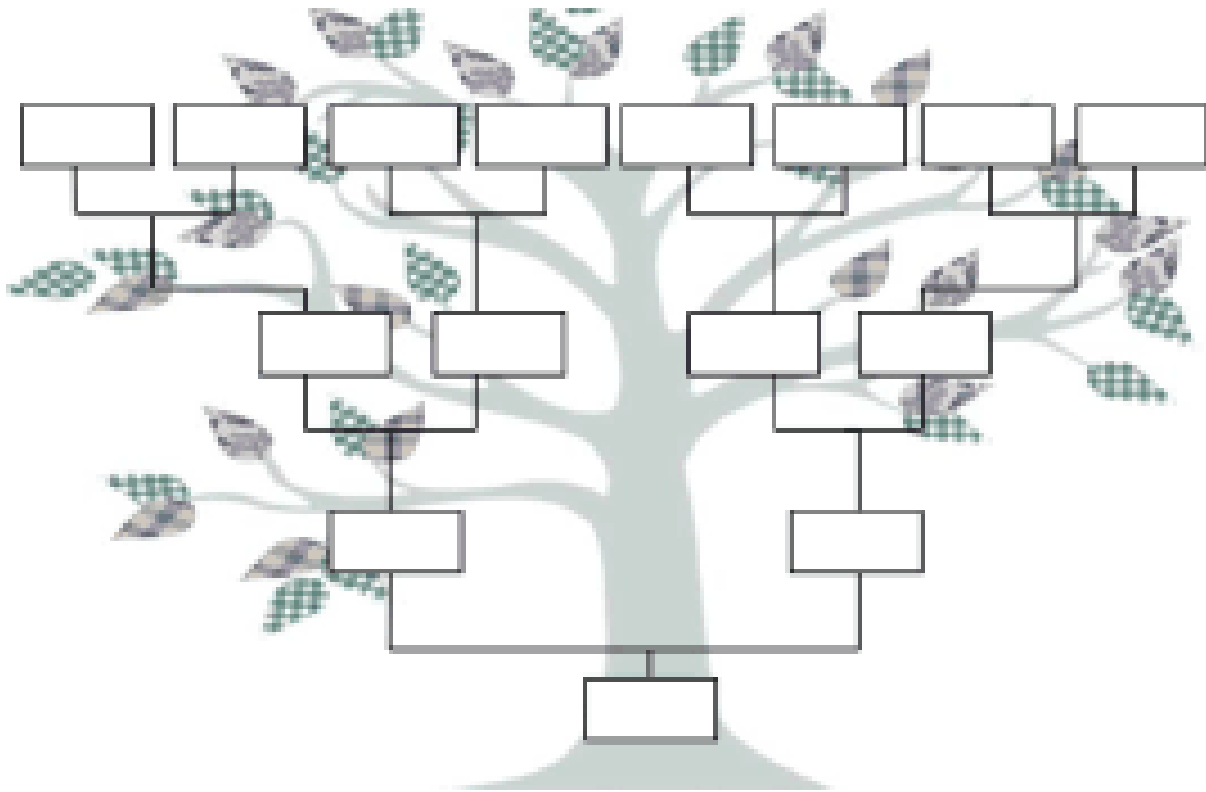


COURSE MAPPING EXERCISE



Listed below are: one College Core Competency, two Program Graduate Outcomes, four Course Objectives/Outcomes, and several Activities/Assessments from a PRINCIPLES OF MANAGEMENT course. Identify the items and place the letters from each item in the appropriate level in the diagram above.

- A. Analyze, evaluate, and present justifiable recommendations for real world management situations/scenarios
- B. Toms Shoes "One-for-One" Sustainability Model Discussion
- C. Teams Make Social Impact by Design Discussion
- D. Critical Thinking—gather factual information and apply it to a given problem in a manner that is relevant, clear, comprehensive, and conscious of possible bias in the information selected.
- E. Propose logical and coherent arguments for real world management scenarios
- F. Hollywood Labor Unions: Building Relationships Assignment
- G. Managing Religious Diversity at Work Discussion
- H. Apply critical thinking processes to ethically analyze and evaluate business situations
- I. Apply organizing processes to management scenarios
- J. Chapter XX Quiz
- K. Demonstrate the ability to use application software, technology, and other resources to research, analyze, and integrate data to solve business problems
- L. Campus-wide Examination Policy Discussion
- M. Assessing Your Flexibility Self-Assessment
- N. Individual SWOT Analysis Assignment
- O. Apply various influencing and directing techniques used by management to management scenarios