

A photograph of a stone path in a forest. The path is made of large, flat, grey stones, some of which are covered in green moss. The path leads into a dense forest with tall trees and green foliage. The image is split vertically by a black line, with a solid blue background on the right side.

# **Establishing and Walking the Pathway to Improving Quality Assurance**

**Dr. Joanne Healy**

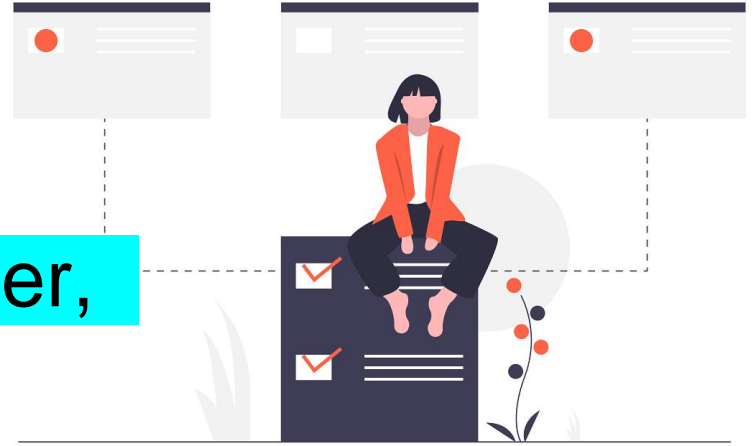
# How is everyone QM-ing? Let's compare paths to QM by role

Questions about YOU!



# Show of Hands - QM Paths

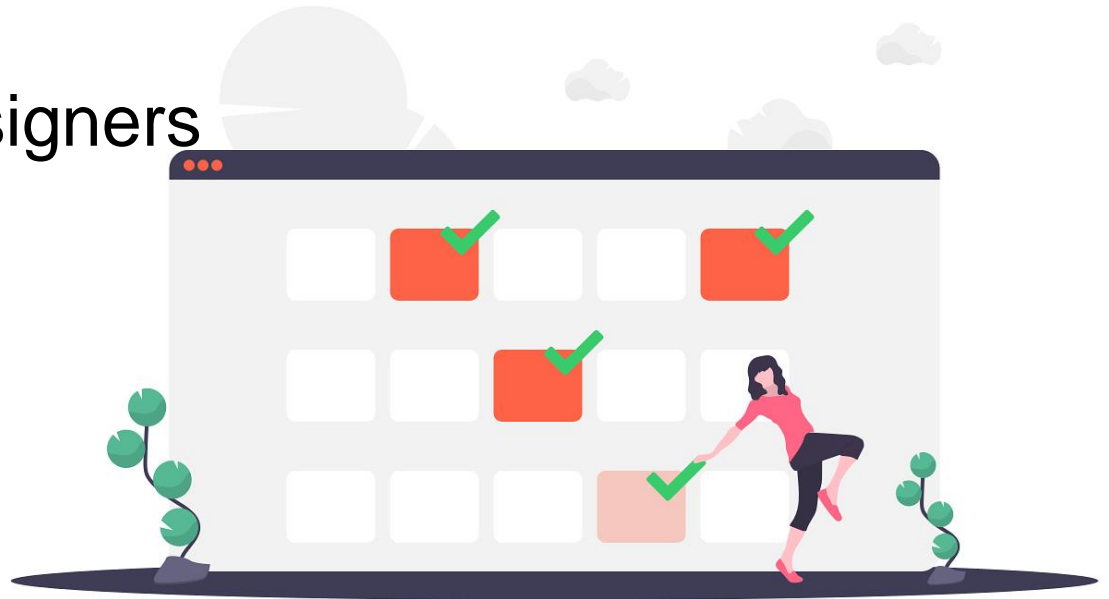
## Faculty, Instructional Designer, and Other Roles Questions



1. Who has completed one-course review?  
five-course reviews? More?
2. Who has completed a program review?
3. Have you been working with QM for one year?  
Five years? More?

# Discuss Effective Design Approaches

- ❑ What worked BEST?
- ❑ Faculty
- ❑ Instructional Designers
- ❑ Other Roles



# Determine best team approach to QM course design

1. Faculty Centered
2. Instructional Designer Centered
3. Synergistic Approaches



Which Path

Will you Choose?



# Contacts

Joanne Healy  
Special Education Program Head  
University of Alaska Fairbanks  
907-474-1557  
[jhealy7@alaska.edu](mailto:jhealy7@alaska.edu)

Janene McMahan  
Instructional Designer  
Quality Matters Coordinator  
University of Alaska Fairbanks  
[vjmcmahan@alaska.edu](mailto:vjmcmahan@alaska.edu)

Reference:

Healy, J., McMahan, J.(11/27/2018) *Our journey with Quality Matters* <https://iteachu.uaf.edu/quality-matters-journey-tt/>

